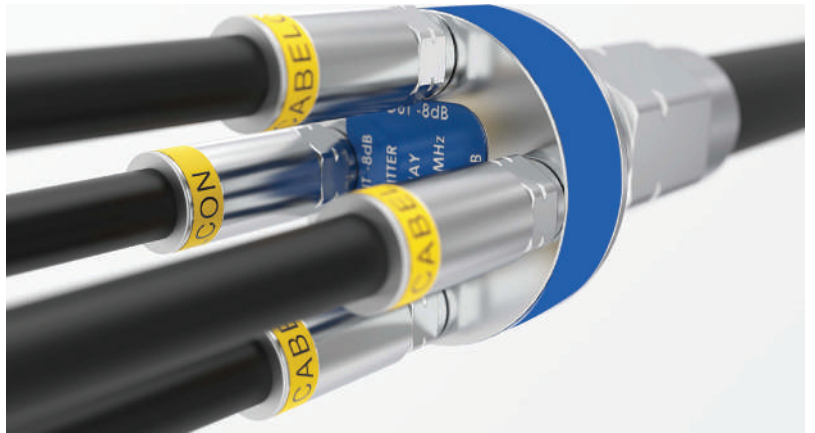


TrueSplit™ Customer Solutions

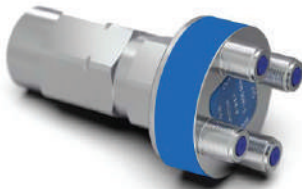
Generally:

- Network noise reduction
- Power for amplifiers reduceable
- All “F” female ports water sealed



Cabelcon TrueSplit Adapter (CTSA)

- Utilize existing True Lock connectors
- “F” female and 3.5/12 F interface available
- 2-, 3-, and 4-way adapters are available for each



Cabelcon TrueSplit Connector (CTSC)

- Connect splitter and tap directly to the trunk line cable
- Available for most common cables



Cabelcon TrueSplit Jumper (CTSJ)

- Plug-and-play solution
- Factory installed on A+ cable



Wall-Mount Clip for TrueSplit Family

- One single metal clip on/off for all TrueSplit types

All below are available as Connector Version (CTSC) or Adapter Version (CTSA) or Jumper Version (CTSJ)

Name	Description	60 V 2A Power-Through
Splitter		
CTSX-02	Splitter 2-Way	Without power through
CTSX-02-P	Splitter 2-Way-2A	With power through
CTSX-03	Splitter 3-Way	Without power through
CTSX-04	Splitter 4-Way	Without power through

All below are available as Connector Version (CTSC) or Adapter Version (CTSA) or Jumper Version (CTSJ)

One-Way TAP		
CTSX-1-6-P	TAP 1-6dB-2A	With power through
CTSX-1-8-P	TAP 1-8dB-2A	With power through
CTSX-1-10-P	TAP 1-10dB-2A	With power through
CTSX-1-12-P	TAP 1-12dB-2A	With power through
CTSX-1-16-P	TAP 1-16dB-2A	With power through
CTSX-1-20-P	TAP 1-20dB-2A	With power through
CTSX-1-24-P	TAP 1-24dB-2A	With power through
CTSX-1-30-P	TAP 1-30dB-2A	With power through
CTSX-2-8-P	TAP 2-8dB-2A	With power through

All below are available as Connector Version (CTSC) or Adapter Version (CTSA) or Jumper Version (CTSJ)

Two-Way TAP		
CTSX-2-10-P	TAP 2-10dB-2A	With power through
CTSX-2-12-P	TAP 2-12dB-2A	With power through
CTSX-2-16-P	TAP 2-16dB-2A	With power through
CTSX-2-20-P	TAP 2-20dB-2A	With power through
CTSX-2-24-P	TAP 2-24dB-2A	With power through
CTSX-2-28-P	TAP 2-28dB-2A	With power through

All below are available as Connector Version (CTSC) or Adapter Version (CTSA) or Jumper Version (CTSJ)

Four-Way TAP (internally terminated, no OUT port)		
CTSX-4-10	TAP 4-10dB	Without power through
CTSX-4-12	TAP 4-12dB	Without power through

